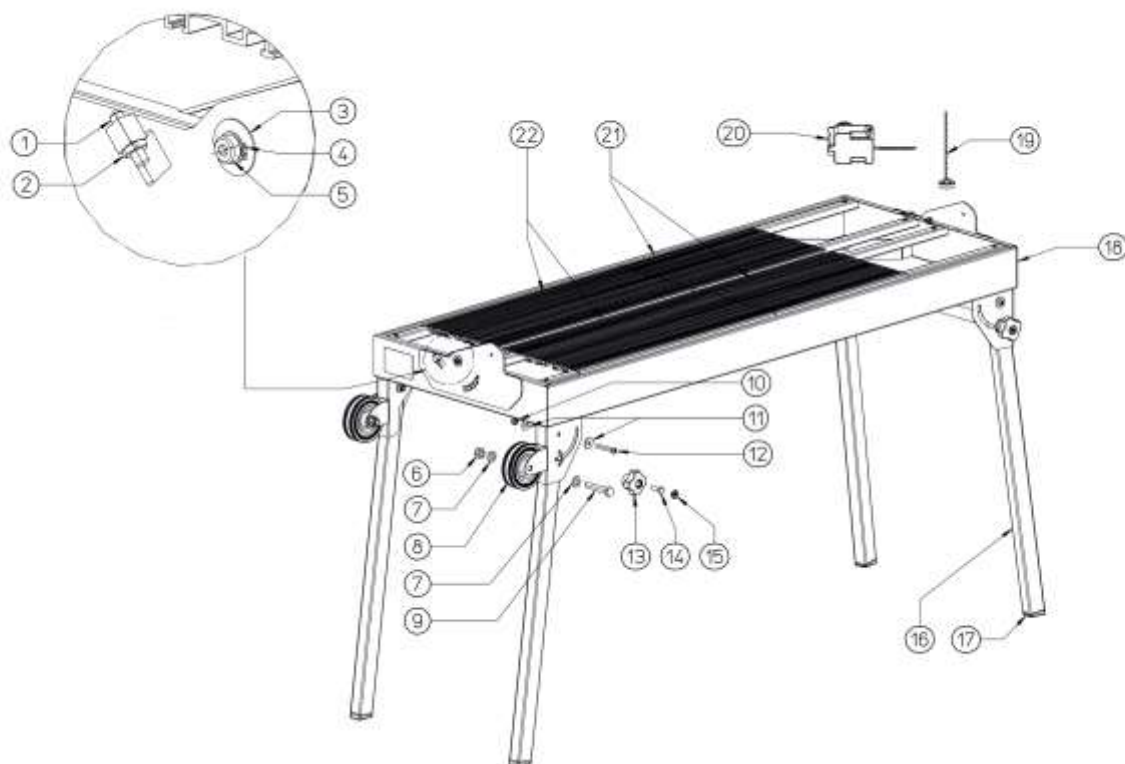


| Part-list | ES | EN | Prod. |
|-----------|----|---------------------------------|----------------------------------|
| 1 | A | GRUPO CHASIS | CHASSIS GROUP |
| 2 | B | GRUPO TOPE LATERAL | SIDE STOP GROUP |
| 3 | C | GRUPO GUIA Y BRAZOS | GUIDE & SUPPORTS GROUP |
| 4 | D | GRUPO CARRO MOTOR 1/2 | MOTOR HOLDER GROUP 1/2 |
| 5 | D | GRUPO CARRO MOTOR 2/2 | MOTOR HOLDER GROUP 2/2 |
| 6 | E | GRUPO MOTOR Y CABEZAL DISCO 1/2 | MOTOR AND CUTTING HEAD GROUP 1/2 |
| 7 | E | GRUPO MOTOR Y CABEZAL DISCO 2/2 | MOTOR AND CUTTING HEAD GROUP 2/2 |

| Prod. | ES | EN | From serial num. |
|-------|---|---|------------------|
| 26912 | DILIGENT-230 1200 230V 50HZ -CORT.ELEC. | DILIGENT-230 1200 230V 50HZ -CORT.ELEC. | 737 |

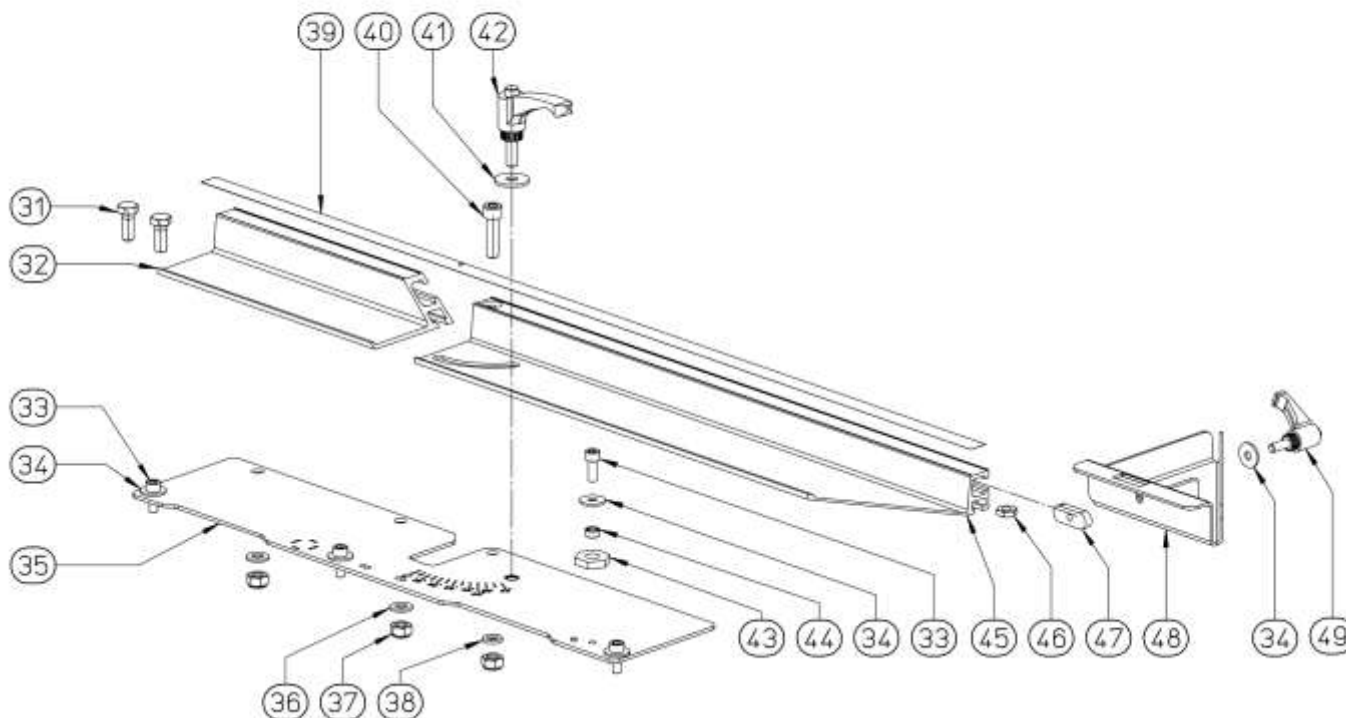
Queda reservado el derecho de introducir cualquier modificacion técnica sin previo aviso
We reserve the right to introduce any technical modification without previous notice

A



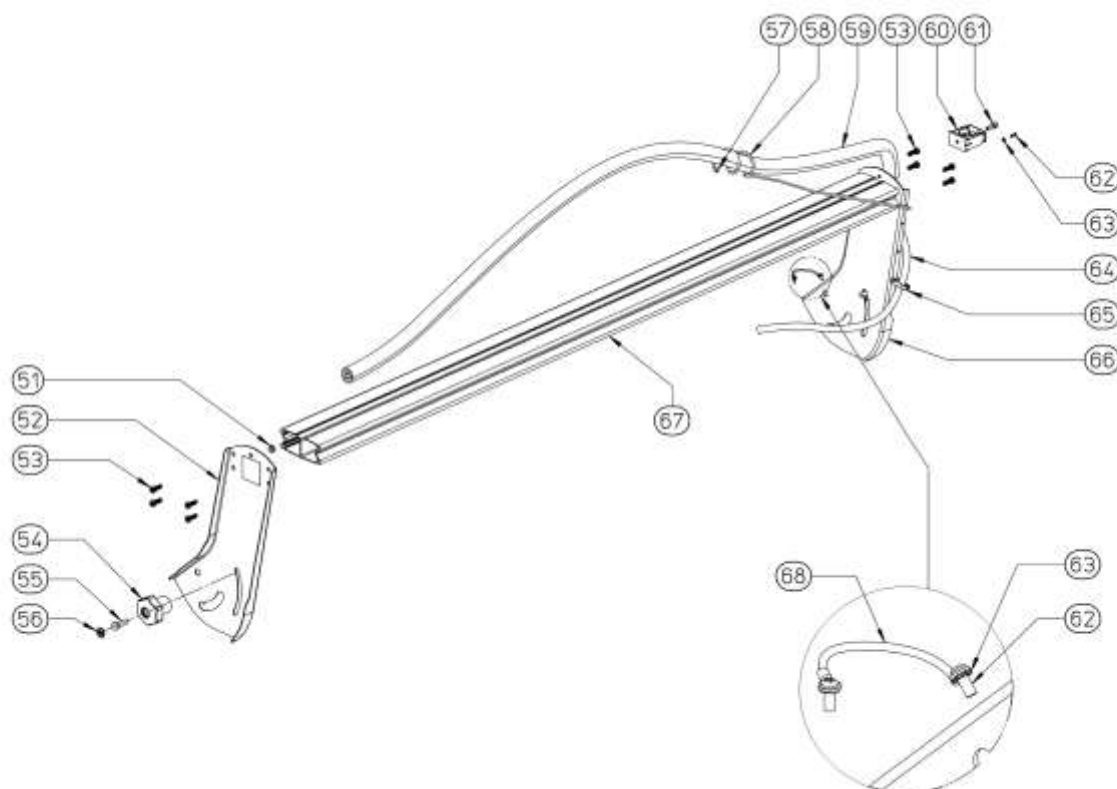
| Part-list | ES | EN | Prod. |
|-----------|-------|----|---|
| 1 | 15745 | 2 | PRISIONERO DIN 913 M6X25 8.8 ZN |
| 2 | 57100 | 2 | TUERCA DIN 439 M6 CL8 ZN |
| 3 | 55419 | 2 | ARAND DIN 2093-B 12,2X25 |
| 4 | 57339 | 2 | ANILLO DIN 471 Ø 12 ZN |
| 5 | 54649 | 2 | EJE CARRO Ø10 M8 ZN |
| 6 | 57366 | 2 | TUERCA DIN 985 M12 CL8 ZN AUTOBL. |
| 7 | 50210 | 4 | ARAND DIN 125 A13 ZN |
| 8 | 61469 | 2 | RUEDA Ø 100 BUJE Ø 12X39 |
| 9 | 54447 | 2 | TORN DIN 931 M12X65 8.8 ZN |
| 10 | 55048 | 4 | TUERCA DIN 985 M8 CL8 ZN AUTOBL. |
| 11 | 55047 | 8 | ARAND DIN 9021 A8,4 ZN |
| 12 | 51490 | 4 | TORN ISO 7380 M8X50 8.8 |
| 13 | 26004 | 4 | POMO M8 VERDE LARGO GSB |
| 14 | 15682 | 4 | TORN DIN 933 M8X25 6.8 |
| 15 | 26006 | 4 | TAPON POMO M8 VERDE GSB |
| 16 | 55389 | 4 | PATA DC/DV 30X40 S/CONTERA |
| 17 | 55390 | 4 | CONTERA 30X40X2 8º INCLINADA |
| 18 | 55379 | 1 | CHASIS DC-1200/DV-1000 |
| 19 | 57145 | 1 | TAPON CON CADENA Ø 35 V2 |
| 20 | 56983 | 1 | BOMBA AGUA FA-180 230/50 55W 2,4M NEGRO |
| 21 | 54669 | 2 | MESA ALUMINIO DS/DX 400MM |
| 22 | 54670 | 2 | MESA ALUMINIO DS/DX 600MM |

B

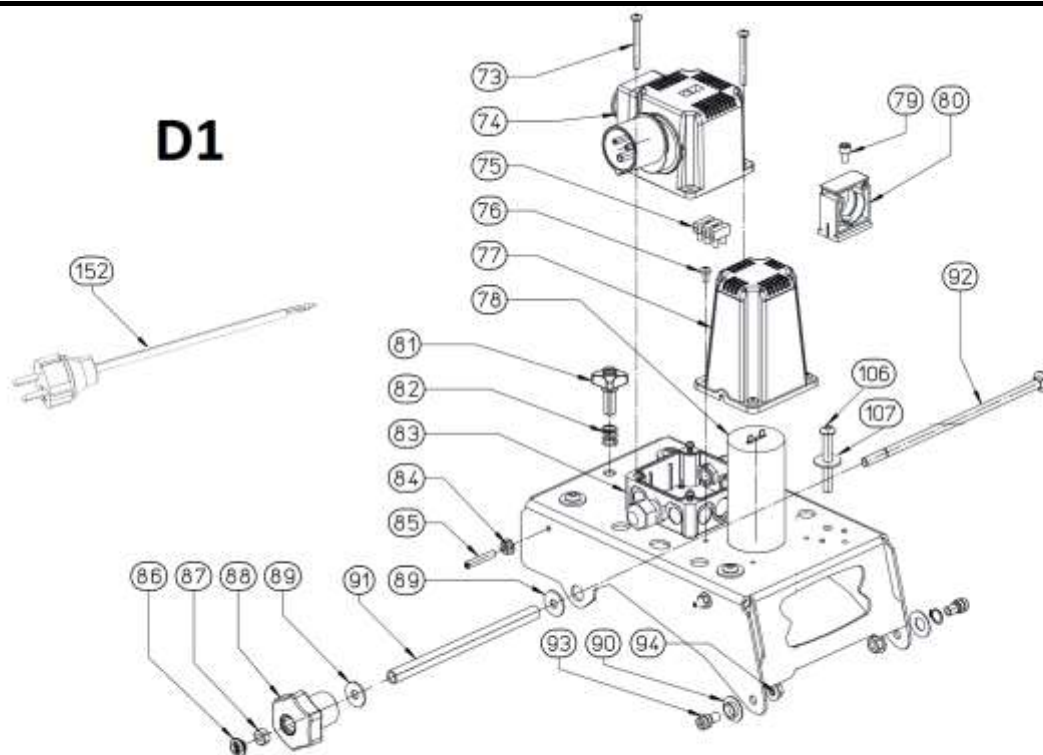


| Part-list | ES | EN | Prod. |
|-----------|---------|---|---|
| 31 | 60435 2 | TORN DIN 933 M8X20 6.8 | SCREW DIN 933 M12X110 6.8 ZP |
| 32 | 54591 1 | TOPE FIJO MESA D-N V2 | FIXING TABLE TOP D-N V2 |
| 33 | 45051 4 | TORN DIN 912 M6X16 6.8 ZN | SCREW DIN 912 M6X16 6.8 ZP |
| 34 | 45038 4 | ARAND DIN 9021 A6,4 ZN | WASHER DIN 9021 A6,4 ZP |
| 35 | 26014 1 | BASE TOPE MESA 500 DC-250 1200 GRAB.GSB | BASE TOPE MESA 500 DC-250 1200 GRAB.GSB |
| 36 | 45056 2 | ARAND DIN 125 A8,4 6.8 ZN | WASHER DIN 125 A8,4 6.8 ZP |
| 37 | 55048 3 | TUERCA DIN 985 M8 CL8 ZN AUTOBL. | HEX LOCK NUT DIN 985 M8 CL8 ZP |
| 38 | 54598 1 | ARAND 14X8,1X2 PA | WASHER 14X8,1X2 PA |
| 39 | 54449 1 | CINTA MM TOPE MESA DW-250-N/NL | LABEL TABLE TOP MM DW-250-N/NL |
| 40 | 12106 1 | TORN DIN 912 M8X30 6.8 ZN BLANCO | SCREW DIN 912 M8X30 6.8 ZP WHITE |
| 41 | 55047 1 | ARAND DIN 9021 A8,4 ZN | WASHER DIN 9021 A8,4 ZP |
| 42 | 54442 1 | MANETA REGULABLE M8X20 PLASTICO | ADJUSTABLE HANDLE M8X20 PLASTIC |
| 43 | 54799 1 | ARAND TOPE ESCUADRA DC/DX/DS | SQUARE STOP WASHER DC/DX/DS |
| 44 | 18305 1 | CASQ 6,3X10X5,2 INOX | BUSHING 6,3X10X5,2 SS |
| 45 | 54542 1 | TOPE GIRATORIO MESA DW-250-NL | SPINNING TABLE TOP DW-250-NL |
| 46 | 54597 1 | TUERCA DIN 439 M8 CL8 ZN | NUT DIN 439 M8 CL8 ZP |
| 47 | 54485 1 | TUERCA M6 12,5X17X5 RECT. | NUT M6 12,5X17X5 SQUARE |
| 48 | 26016 1 | TOPE LATERAL 45° 12CM DW/DC GSB | TOPE LATERAL 45° 12CM DW/DC GSB |
| 49 | 54441 1 | MANETA REGULABLE M6X16 PLASTICO | ADJUSTABLE HANDLE M6X16 PLASTIC |

C

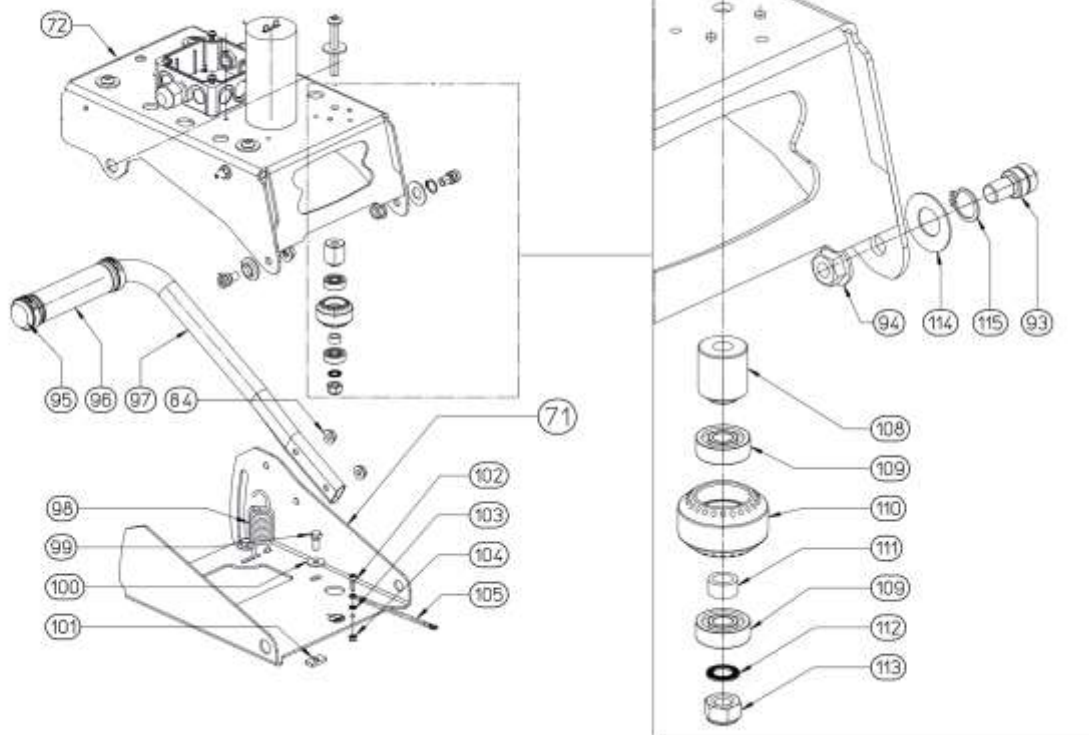


| Part-list | ES | EN | Prod. |
|-----------|---------|--------------------------------------|----------------------------------|
| 51 | 54783 1 | TOPE GOMA ISC Ø12X2.5-Ø7X2 | RUBBER STOP ISC Ø12X2.5-Ø7X2 |
| 52 | 26001 1 | BRAZO ANTERIOR DC-250 GSB | BRAZO ANTERIOR DC-250 GSB |
| 53 | 54457 8 | TORN DIN 6928 - C HEXG. 6,3X40 6.8ZN | SCREW DIN 6928 EXG.6,3X40 6.8 ZP |
| 54 | 26004 2 | POMO M8 VERDE LARGO GSB | POMO M8 VERDE LARGO GSB |
| 55 | 15682 2 | TORN DIN 933 M8X25 6.8 | SCREW DIN 933 M8X25 6.8 |
| 56 | 26006 2 | TAPON POMO M8 VERDE GSB | GREEN KNOB CAP M8 DIY |
| 57 | 54767 1 | CAPUCHON TUBO ISC 4-3,9-5,5 NEGRO | TUBE CAP ISC 4-3,9-5,5 BLACK |
| 58 | 57664 1 | ALZADOR TUBO | PIPE HOLDER |
| 59 | 54301 1 | TUBO FLEXIBLE NEGRO Ø 22 INT. | BLACK CABLE PIPE DIA 22 INT. |
| 60 | 52095 1 | BRIDA TUBO Ø 28 DX-250 | TUBE FLANGE DIA.28 DX-250 |
| 61 | 45051 1 | TORN DIN 912 M6X16 6.8 ZN | SCREW DIN 912 M6X16 6.8 ZP |
| 62 | 55411 3 | TORN DIN 7981-F 3,9X9,5 INOX A2 | SCREW DIN 7981-F 3,9X9,5 SS A2 |
| 63 | 45343 3 | ARAND DIN 6798 A4,3X8 INOX A2 | WASHER DIN 6798 A4,3X8 SS A2 |
| 64 | 54177 1 | PVC CRISTAL Ø 9X12 | PVC CRISTAL Ø 9X12 |
| 65 | 55417 1 | ABRAZADERA CABLEADO DC-250 NEGRA | CABLE CLAMP DC-250 |
| 66 | 26082 1 | BRAZO POSTERIOR DC-250 GSB V2 | BRAZO POSTERIOR DC-250 GSB V2 |
| 67 | 55404 1 | GUIA MOTOR DC-250 1444MM | GUIDE MOTOR DC-250 1444MM |
| 68 | 54483 1 | CABLE TIERRA BRAZO 100X2,5MM | GROUND CONNECTION ARM 100X2,5MM |



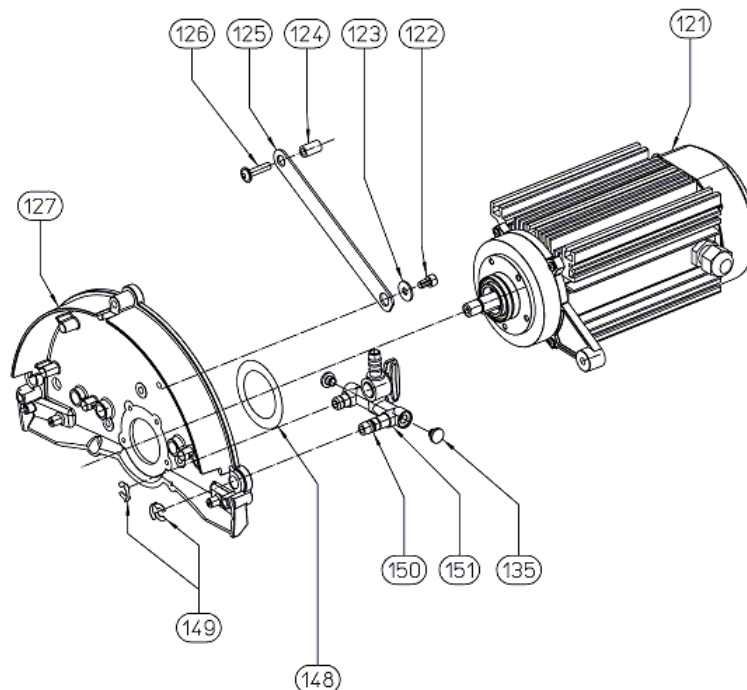
| Part-list | ES | EN | Prod. |
|-----------|---------|-------------------------------------|---------------------------------|
| 73 | 56334 2 | TORN DIN 7985 M5X50 6.8 ZN | SCREW DIN 7985 M5X50 6.8 ZP |
| 74 | 26013 1 | ARRANCADOR 230V 50HZ GSB | STARTER 230V 50HZ GSB |
| 75 | 55230 1 | REGLETA CONEXION ROH-2 | CONNECTION JOINT ROH-2 |
| 76 | 50218 4 | TORN DIN 7985 M5X10 6.8 ZN | SCREW DIN 7985 M5X10 6.8 ZP |
| 77 | 54790 1 | CARCASA CONDENSADOR DC-250 | CAPACITOR CASE DC-250 |
| 78 | 45554 1 | CONDENSADOR 25MF 450V 50HZ | CAPACITOR 25MF 450V 50HZ |
| 79 | 45043 1 | TORN DIN 912 M6X10 6.8 ZN | SCREW DIN 912 M6X10 6.8 ZP |
| 80 | 52095 1 | BRIDA TUBO Ø 28 DX-250 | TUBE FLANGE DIA.28 DX-250 |
| 81 | 26015 1 | POMO M10X25 NYLON GSB | POMO M10X25 NYLON GSB |
| 82 | 52032 1 | MUELLE COMPRESION 15X12 Ø1,5 | COMPRESSION SPRING 15X12 Ø1,5 |
| 83 | 54444 1 | BASE INTERRUPTOR 85X85X34 2M16 1M20 | SWITCH BASE 85X85X34 2M16 1M20 |
| 84 | 83035 4 | TUERCA DIN 6923 M6 CL8 ZN | NUT DIN 6923 M6 CL8 ZP |
| 85 | 54567 2 | PRISIONERO DIN 913 M6X35 ZN | PIN DIN 913 M6X35 ZP |
| 86 | 26006 1 | TAPON POMO M8 VERDE GSB | GREEN KNOB CAP M8 DIY |
| 87 | 45055 1 | TUERCA DIN 934 M8 CL8 ZN | HEX NUT DIN 934 M8 CL8 ZP |
| 88 | 26004 1 | POMO M8 VERDE LARGO GSB | POMO M8 VERDE LARGO GSB |
| 89 | 55047 2 | ARAND DIN 9021 A8,4 ZN | WASHER DIN 9021 A8,4 ZP |
| 90 | 55489 2 | CASQ Ø12XØ15X7 C/VALONA | BUSHING Ø12XØ15X7 |
| 91 | 52018 1 | TUBO Ø 9X12X182,5 ZN | TUBE Ø 9X12X182,5 ZP |
| 92 | 54575 1 | TORN DIN 603 M8X225 8.8 ZN CC2 | SCREW DIN 603 M8X225 8.8 ZP CC2 |
| 93 | 54649 2 | EJE CARRO Ø10 M8 ZN | SHAFT HOLDER Ø10 M8 ZP DC-250 |
| 94 | 57335 2 | TUERCA DIN 6923 M8 CL8 ZN | NUT DIN 6923 M8 CL8 ZP |
| 106 | 54859 4 | TORN ISO 7380 M8X60 10.6 ZN | SCREW ISO 7380 M8X60 10.6 ZP |
| 107 | 55047 4 | ARAND DIN 9021 A8,4 ZN | WASHER DIN 9021 A8,4 ZP |
| 152 | 50203 1 | ENCHUFE CABL.3X1,5 3,5M | CABLE+PLUG 3X1,5 3,5M |

D2



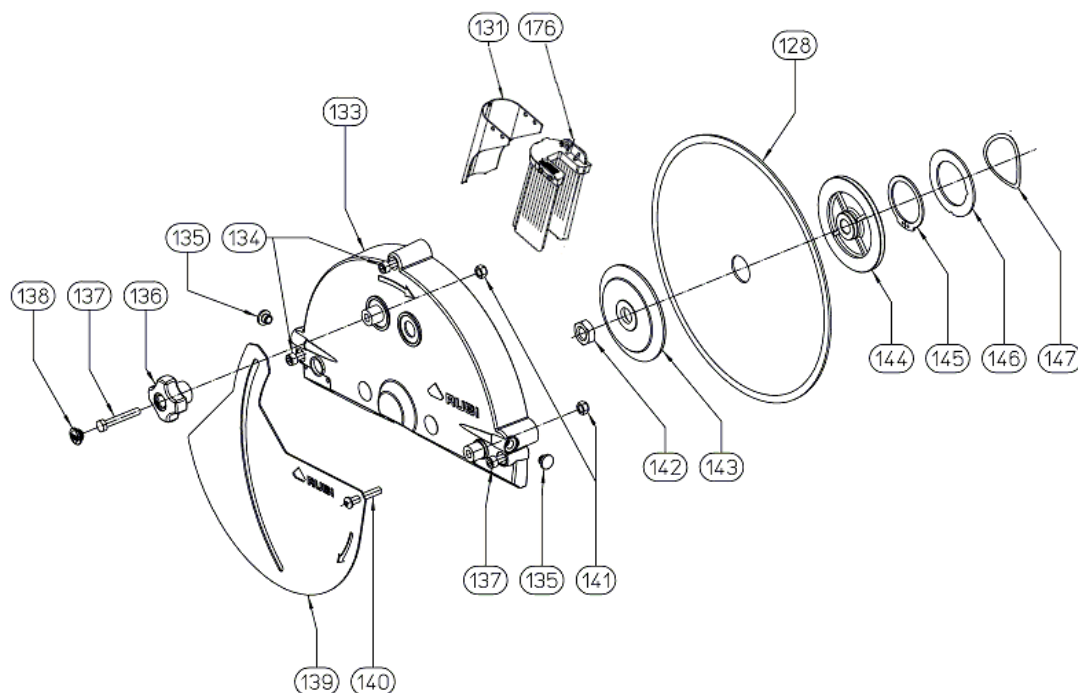
| Part-list | ES | EN | Prod. |
|-----------|---------|---------------------------------------|----------------------------------|
| 71 | 26009 1 | SOPORTE MOTOR DC-250 GSB | SOPORTE MOTOR DC-250 GSB |
| 72 | 26010 1 | SOPORTE RUEDAS DC-250 GSB | SOPORTE RUEDAS DC-250 GSB |
| 84 | 83035 4 | TUERCA DIN 6923 M6 CL8 ZN | NUT DIN 6923 M6 CL8 ZP |
| 93 | 54649 2 | EJE CARRO Ø10 M8 ZN | SHAFT HOLDER Ø10 M8 ZP DC-250 |
| 94 | 57335 2 | TUERCA DIN 6923 M8 CL8 ZN | NUT DIN 6923 M8 CL8 ZP |
| 95 | 18211 1 | TAPON PLASTICO MANGO Ø31/22 | PLASTIC CAP GRIP Ø31/22 |
| 96 | 70520 1 | EMPUÑADURA RUGOSA MANGO ALUMINIO | EMPUÑADURA RUGOSA MANGO ALUMINIO |
| 97 | 54784 1 | ASA DC-250 | HANDLE DC-250 |
| 98 | 54723 1 | TORN DIN 933 M6X14 8.8 ZN | SCREW DIN 933 M6X14 8.8 ZP |
| 99 | 7165 4 | TORN DIN 933 M6X16 8.8 ZN | SCREW M6X16 DIN 933 8.8 |
| 100 | 45038 4 | ARAND DIN 9021 A6,4 ZN | WASHER DIN 9021 A6,4 ZP |
| 101 | 52120 4 | TUERCA M6 3X10X20 6.8 ZN | NUT M6 3X10X20 6.8 ZP |
| 102 | 56034 1 | TORN DIN 912 M4X12 INOX A2 | SCREW DIN 912 M4x12 8.8 SS A2 |
| 103 | 45343 1 | ARAND DIN 6798 A4,3X8 INOX A2 | WASHER DIN 6798 A4,3X8 SS A2 |
| 104 | 65257 1 | TUERCA DIN 985 M4 CL8 ZN AUTOBLOC | HEX LOCK NUT DIN 985 M4 CL8 ZP |
| 105 | 55448 1 | CABLE TIERRA 1650X1,5MM | GROUND CONNECTION 1650X1,5MM |
| 108 | 54756 4 | DISTANCIADOR RUEDA EST.DC/DV/DS/DX V2 | WHEEL SEPARATOR DC/DV/DS/DX V2 |
| 109 | 57430 8 | RODAMIENTO 608 8X22X7 2RS1 | BEARING 608 8X22X7 2RS1 |
| 110 | 54798 4 | RUEDA ESTANDAR PARA DC/DV/DS/DX | STANDARD WHEEL FOR DC/DV/DS/DX |
| 111 | 54757 4 | CASQ Ø12XØ8X6 | BUSHING Ø12XØ8X6 |
| 112 | 52099 4 | ARAND Ø 8,4 CONICA ESTRIADA AET | WASHER DIA.8,4 |
| 113 | 55048 4 | TUERCA DIN 985 M8 CL8 ZN AUTOBL. | HEX LOCK NUT DIN 985 M8 CL8 ZP |
| 114 | 55419 1 | ARAND DIN 2093-B 12,2X25 | WASHER DIN 2093-B 12,2X25 |
| 115 | 57339 1 | ANILLO DIN 471 Ø 12 ZN | WASHER DIN 471 DIA.12 ZP |

E1



| Part-list | | | ES | EN | Prod. |
|-----------|-------|---|------------------------------------|--|-------|
| 121 | 52001 | 1 | MOTOR 230V 50HZ 1,1KW | MOTOR 230V 50HZ 1,1KW | |
| 122 | 61069 | 1 | TORN DIN 912 M6X10 6.8 ZN TRILOB. | SCREW DIN 912 M6X10 6.8 ZP TRILOB. | |
| 123 | 45038 | 1 | ARAND DIN 9021 A6,4 ZN | WASHER DIN 9021 A6,4 ZP | |
| 124 | 55415 | 1 | CASQ 6,1X10X17 PA 6,6 | BUSHING 6,1X10X17 PA 6,6 | |
| 125 | 54557 | 1 | BIELA PROTECCION DISCO DW-250-N/NL | BLADE PROTECTOR CONNECTING ROD.W-250-N/L | |
| 126 | 54608 | 1 | TORN ISO 7380 AR M6X25 6.8 ZN | SCREW ISO 7380 AR M6X25 6.8 ZP | |
| 127 | 54788 | 1 | TAPA DISCO POSTERIOR Ø 250 V3 | TAPA DISCO POSTERIOR DIA.250 V3 | |
| 148 | 16111 | 1 | JUNTA TORICA OR 7X2 | O-RING OR 7X2 | |
| 149 | 54239 | 1 | COM.VALVULA D-N | VALVE SET D-N | |
| 150 | 16111 | 1 | JUNTA TORICA OR 7X2 | O-RING OR 7X2 | |
| 151 | 54239 | 1 | COM.VALVULA D-N | VALVE SET D-N | |

E2



| Part-list | ES | EN | Prod. |
|-------------|-----------------------------------|---------------------------------|-------|
| 128 26008 1 | DISCO SIN ETIQ.STANDARD 230 GSB | BLADE WO LABEL STANDARD 230 GSB | |
| 131 55414 1 | PROTECTOR AGUA DISCO Ø 250 V2 | PROTECTOR AGUA BLADE DIA.250 V2 | |
| 133 26012 1 | TAPA DISCO ANTERIOR Ø 250 GSB | TAPA DISCO ANTERIOR DIA.250 GSB | |
| 134 17177 4 | TORN DIN 912 M6X35 6.8 ZN | SCREW DIN 912 M6X35 6.8 ZP | |
| 135 17235 4 | TAPON PLASTICO Ø INT.8,25 MM | PLASTIC CAP TR 8,25 MM | |
| 136 19609 1 | POMO M6 ESTANDAR VERDE | GREEN STANDARD M6 KNOB | |
| 137 17416 1 | TORN DIN 933 M6X45 INOX ZN | SCREW DIN 933 M6X45 SS A2 | |
| 138 19611 1 | TAPON POMO M6 VERDE | GREEN COVER KNOB M6 | |
| 139 54861 1 | TAPA DISCO PLANA DC/DX/DW-250 V3 | BLADE COVER DC/DX/DW-250 V3 | |
| 141 40020 2 | TUERCA DIN 985 M6 CL8 ZN AUTOBLOC | HEX LOCK NUT DIN 985 M6 CL8 ZP | |
| 142 56438 1 | TUERCA DIN 936 M12 IZQ CL8 ZN | NUT DIN 936 M12 LEFT CL8 ZP | |
| 143 57453 1 | PLATO EXT.13,5X22,4X90 | EXTERNAL PLATE 13,5X22,4X90 | |
| 144 45328 1 | PLATO INT.13X22,2X90 | INTERNAL PLATE 13X22,2X90 | |
| 145 52170 1 | ANILLO DIN 471 Ø 42 INOX | RING DIN 471 DIA.42 INOX | |
| 146 52169 1 | ARAND 42X62X2 ZN | WASHER 42X62X2 ZP | |
| 147 52168 1 | ARAND MTA 90 Ø 44 | WASHER MTA 90 DIA.44 | |
| 176 54881 1 | PROTECTOR AGUA CEPILLO M16 Ø250 | BRUSH WATER PROTECTION M16 Ø250 | |